

Digital Audio Player

Your Pocket Guide

EN**1**

Get Connected

2

Transfer Music

3

Plug Your Ears & Enjoy

MP2050UK

What' s in the blister?	2
System Requirement	3
Transfer	4
Know Your Player Well	5 - 6
Music Playback	7
Edit Lyrics	8
Repeat Mode & EQ Mode	9
Record & Voice Playback	10
Settings	11 - 12
Technical Data	13
Trouble Shooting	14

What's in the blister?

What's in the blister?



Digital Audio Player



Earphone



Your Pocket Guide



CD-ROM containing:
Media player driver for
Windows® 98



1 x AAA 1.5V Battery

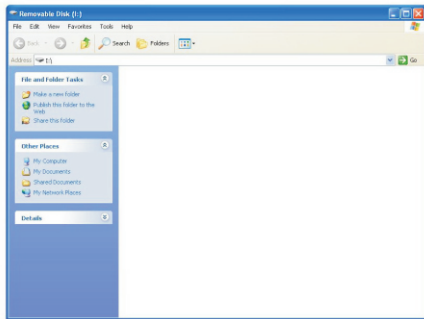
You' ll need a computer with:



- Windows® 98/2000/XP/Vista
- Pentium Class or faster Processor
- CD-ROM Drive
- 64MB RAM
- 30MB free hard disk space
- USB Port

For Windows® 98 users, please install the driver in the CD-ROM before downloading any files to your player.

Get Your Player Connected & Transfer



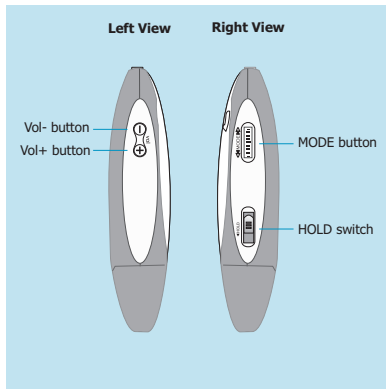
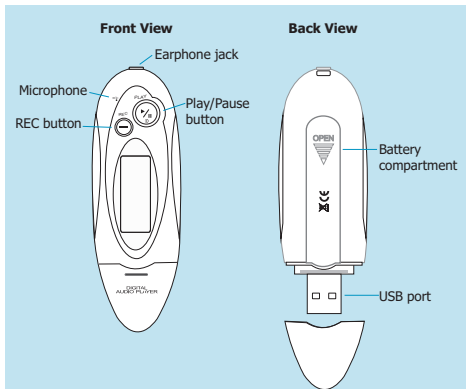
Step 1:

Plug this player to the USB port of your PC. Once the connection is successfully made, the **Removable Disk** window would pop up. Try re-connecting the player if it doesn't appear.

Step 2:

Drag and drop your audio files into the removable disk. You can create any folder or directory in the removable disk. Close the removable disk window and disconnect the player from your PC after the data transfer.

Know Your Player Well



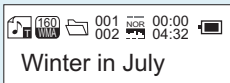
Buttons Operation

	To	Press
General	Turn On/Off	Hold the Play/Pause button
	Scroll through lists	Push the MODE button leftwards / rightwards
	Select Option	MODE
	Return to Main Menu	Hold the MODE button
	Have the device hold / unhold	Switch the HOLD switch
Music	Start recording	REC
	Play/Pause songs	Play/Pause
	Jump to next song	Push the MODE button rightwards ►
	Fast Forward	Hold the MODE button rightwards
	Move back to previous song	Push the MODE button leftwards ◀
	Fast Backward	Hold the MODE button leftwards
	Display lyrics	Hold the MODE button for 2 seconds
	Stop lyrics display	MODE
	Volume up	Vol+
Volume down	Vol-	

Have the player hold / unhold:

If you want to have your player locked while enjoying music, you can slide the HOLD switch, then all operations on buttons will be invalid. And you can unlock your player by switching it back.

Music Playback



Select **MSC** on the main menu and press the MODE button to enter the music mode, then you can select different songs by pushing the MODE button leftwards / rightwards, and press the Play/Pause button to start playing the song you select.

While enjoying music, you can press the Play/Pause button to pause or continue the music; Push the MODE button leftwards / rightwards to move back to the previous song or jump to the next song; Hold the MODE button leftwards / rightwards to move your song forward or rewind it. If you want to adjust the volume, please press Vol- / Vol+ buttons .

Display Lyrics

Many roads are ahead
of us

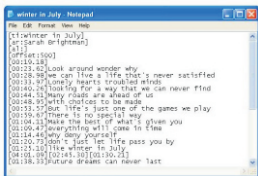


The edited lyrics will be displayed synchronously if you press the MODE button for 2 seconds while playing music. And you can press the MODE button to quit the lyrics display screen.

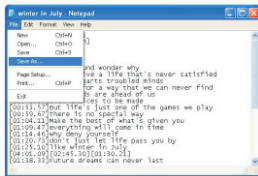
Edit Lyrics

You can copy the synchronous lyrics from Internet, and create a new **Text Document** on your PC, paste them, and then select to save this document in the extension of **.LRC** shown as below.

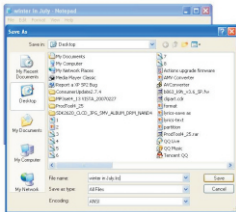
Then put both **.LRC** and **.MP3** (or **.WMA**) files of the same song into the same folder in the removable disk. Your lyrics would be shown when you play that song.



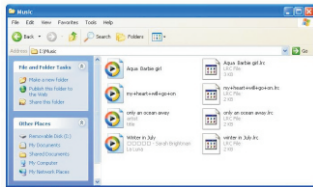
1



2



3



4

Repeat Mode

Procedure:

while playing music, press the MODE button to enter the selection menu screen. Choose **Repeat** and press the MODE button again to enter the **Repeat** menu screen.

You can push the MODE button leftwards / rightwards to select your desired repeat mode, and press the MODE button to confirm your setting.

EQ Mode

Procedure:

while playing music, press the MODE button to enter the selection menu screen. Push the MODE button rightwards to select **Equalizer**, and press the MODE button to enter the **Equalizer** menu screen.

You can push the MODE button leftwards / rightwards to select your desired EQ mode, and press the MODE button to confirm your setting.

7 Repeat Modes are available:

Normal, Repeat One, Folder, Repeat Folder, Repeat All, Random, Intro.

Normal

All music files will be played one by one and stopped at the last music until you disable this function.

Repeat One

The currently played song will be played repeatedly until this function is disabled.

Folder

All music in the selected folder would be played once until this function is disabled.

Repeat Folder

All music in the selected folder would be played from the beginning to the last one repeatedly until this function is disabled.

Repeat All

All music would be played from the beginning to the last one repeatedly until this function is disabled.

Random

All music would be played randomly until this function is disabled.

Intro

All music would be played for 10 seconds from the beginning until this function is disabled.

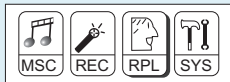
7 EQ Modes are available: Natural, Rock, Pop, Classic, Soft, Jazz, DBB.

Voice Recording



Push the MODE button leftwards / rightwards to select **REC** on the Main Menu. Then press the MODE button to enter the voice recording mode. You can press the Play/Pause button to start recording, and save the recorded voice by holding the MODE button.

You can have a quick access to the Voice Recording Mode: In the STOP mode, press the REC button to enter the Voice Recording Mode and start recording.



Voice Playback

Push the MODE button leftwards / rightwards to select **RPL** on the Main Menu.

Press the MODE button to enter the Voice Playback Mode. You can push the MODE button leftwards / rightwards to select a recorded voice file, and then press the Play/Pause button to start voice playing.

If you want to delete the selected voice file, you can press the MODE button to enter the sub-menu. Push the MODE button rightwards to select **Delete**, and press the MODE button to confirm. Then a dialog box of "**Delete file**" will be shown. Push the MODE button leftwards / rightwards to choose **YES**, and press the MODE button to confirm.

Setting Language

Step 1:

Push the MODE button leftwards / rightwards to select **SYS** on the Main Menu, then press the MODE button to enter its sub-menu.

Step 2:

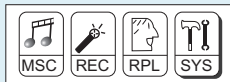
Push the MODE button rightwards to select **Language**, then press the MODE button to confirm.

Step 3:

You can select your preferred language by pushing the MODE button leftwards / rightwards, and then press the MODE button to confirm your setting.

12 languages are available:

Simple Chinese	German
English	Italian
Trad Chinese	Dutch
Japanese	Portuguese
Korean	Spanish
French	Polish



Setting Clock

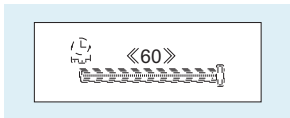
Step 1: Select **Clock** on the sub-menu of **SYS**, and press the MODE button to enter the clock setting screen.

Step 2: You can press Vol- / Vol+ buttons to move among Year : Month : Day : Hour : Minute : Second. And push the MODE button leftwards / rightwards to adjust them.

Step 3: At last, press the MODE button to confirm your setting.

After finishing system settings, push the MODE button rightwards to looking for **Exit** on the sub-menu of **SYS**, and then press the MODE button to quit the SYS screen.

Auto-Power Off Setup



Step 1:

Push the MODE button rightwards to select **Power off** on the sub-menu of **SYS**, and press the MODE button to enter its sub-menu.

Select **Off time**, and press the MODE button to confirm.

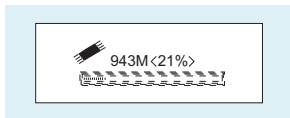
Step 2:

You can adjust the off time by pushing the MODE button leftwards / rightwards, and then press the MODE button to confirm your setting.

In the IDLE mode (no button is pressed), the player will be turned off automatically based on the duration you set.

You may set it as "0" to disable this function.

Checking Memory Status



Push the MODE button rightwards to select **Memory info** on the sub-menu of **SYS**, and press the MODE button to confirm.

Then the used memory status can be shown.

Technical Data

General Information

Power Supply	1 x AAA 1.5V Battery
Dimensions	32mm x 93mm x 24mm
Weight	20g
Display	128 x 32 28PIN
Capacity	128MB/256MB/512MB/1GB/2GB internal flash memory
Operating System	Windows® 98/2000/XP/Vista
Interface	USB HOST 2.0
Operating Voltage	1.5V

Audio Playback

Compression Formats	.M P3 (32kbps ~ 320kbps) .WMA (32kbps ~ 192kbps)
S/N ratio	85dB
Earphone Output Power	8mWx, 32ohm
THD+N	<0.6
Crosstalk	>50dB
Voice Recording	
Supported File Types	.ACT and .WAV files

What should I do if ...

Q: I cannot put any file into the removable disk for the first usage, it prompts that the disk is full.

A: You can format the disk at first, then put files into it again.

Q: I've put the audio files into the player, but when I select to play music, it still prompts "Empty Disk".

A: Maybe the battery is of low power. You may replace it with a new battery, and try playing music again.

Q: I cannot enter the MUSIC mode after using the player for a period of time.

A: You should format the memory of the player under connection to PC.
(Be sure you remember to backup the data in your player before performing the above action.)

Disposal of your old product

Electrical and electronic equipment (EEE) contains materials, parts and substances which can be dangerous to the environment and harmful to human health if wastes of electrical and electronic equipment (WEEE) are not disposed correctly.

Equipments which are marked with the WEEE logo (as shown on the right), should not be thrown away with your household waste. Contact your local Authority Waste Disposal Department as they will be able to provide details of the recycling options available in your area.







Printed in China